



Edmonton Ambulance Authority
#1 Station, Headquarters
10510 - 107 Avenue
Edmonton, Alberta

PHOTO SURVEY - April 21, 1989

EB-47-1



April 21, 1989

#1

1. South side of #1, left hand side.
The main floor houses the garage and most of the road crew spaces.
2. South side of #1, right hand side.
The public entrance is at the East end.

EB-47-2



April 21, 1989

#1

3. West end of building, showing other entrances to the garage. The building is right up in the north property line.

EB-47-3



April 21. 1989

#1

4. A view of SW corner of building.

EB-47-4



April 21, 1989

#1

5. The east end of the building, 4 visitor parking stalls. There are usually not enough stalls available.

EB-47-5



April 21, 1989

#1

6. Staff parking lot to north and east of headquarters.

EB-47-6



April 28, 1989

#1

1. The waiting area on the second floor, from the door. The boardroom is at the end of the hallway on the R.H.S.; the managers' offices are on the L.H.S.. The size of the waiting area is considered adequate.

EB-47-7



April 28, 1989

#1

2. A view into the open office area from the waiting area.

EB-47-8



April 28, 1989

#1

3. West side of office space, L.H.S.. Computer room behind the workstation. Hanging files on left belong to the workstation; access to the Computer Room is through the workstation. The Computer Room is not big enough to accommodate the printer on the table.

EB-47-9



April 28, 1989

#1

4. West side of office space R.H.S.. workstation behind screen is Personnel Assistant. Workstation in front of screen (with printer) is used by computer programmer or others needing work space. The counter at the back with orange Cerlex machine is mail area. People accessing the consellor's workspace, the mail area or the stationery store walk through the workspace of the clerk.

EB-47-10



April 28, 1989

#1

5. East side of office space, L.H.S..
There are three workstations between pillar and window, plus one left of pillar (#4). There is only room to sit at the desks and no circulation around the desks. The machine at the right is for microfilming patient reports.

EB-47-11

April 28, 1989

#1

6. East side of office space, R.H.S..
The space to the south of the screen is the microfilm storage and reading area. The layout and relationship of the various parts is fine, but the overall area is too small.
The cupboard on the right is the coffee area for the second floor.
To the right of the kitchen area is the reception counter and desks.

EB-47-12



April 28, 1989

#1

7. Looking into Personnel Assistant's space. The north "wall" of her space (where she is standing) is created from lateral filing cabinets. To the right of the pillar is a door to the stationery storage area.

EB-47-13



April 28, 1989

#1

8. A view of mail and document assembly area from stationery store. A staff member is using the type writer (see #7).

EB-47-14



April 28, 1989

#1

9. A view of north side of stationery store, including copier and its extra paper trays.

EB-47-15

April 28, 1989

#1

10. The south side, including the shredder and the copier's paper. The size of the storage is adequate for its original purposes, but is inadequate with all the extra equipment.

EB-47-16



July 26, 1989

#1

1. From South West corner, looking to North wall.

EB-47-48



July 26, 1989

#1

2. From South West corner, looking to North East corner.

EB-47-49



July 26, 1989

#1

3. From South West corner, looking to East wall.

The folding door separates C.C. from lounge area outside Medical Directors' offices.

Office of supervisor is on East wall, under the clock.

Overhead T.V. screen is security monitor for garage on main floor.

EB-47-50



July 26, 1989

#1

4. West wall showing map of Edmonton and outlying counties, bookshelf and 24 hour recorder.

Desk at right is location for potential fourth workstation.

EB-47-51



July 26, 1989

#1

5. Entire workstation; radio at right (telephone receiver). EB-47-52

6. View to South West corner from South East. Overhead T.V. screen in South West corner.

Each workstation has incandescent lighting controlled from the workstation. There are also fluorescent lights in the ceiling. Telex is to the right of the desk. EB-47-53

7. Coffee/lounge area to East of communications Centre; photo taken from top of stairs.

EB-47-54



April 28, 1989

#1

11. East end of boardroom. The room is an oval shape, and contains a small coffee prep area on the north side (to left of photo). When all the board is present, plus some members of management staff there is not enough room.

EB-47-55

April 28, 1989

#1

12. The office of the secretary to The Board. In addition to the filing cabinet behind here, there is 1 tall set of bookshelves filled with minutes, plus a typewriter plus a fax machine in the office.

EB-47-56



April 28, 1989

#1

13. Communications Centre. L.H. console-
Call Evaluator position. The TV mon-
itors on top of the console over the
radio mikes tracks activity in the
garage area. To the left of this con-
sole is the 24 hour dictaphone which
records all incoming calls continously.

EB-47-57

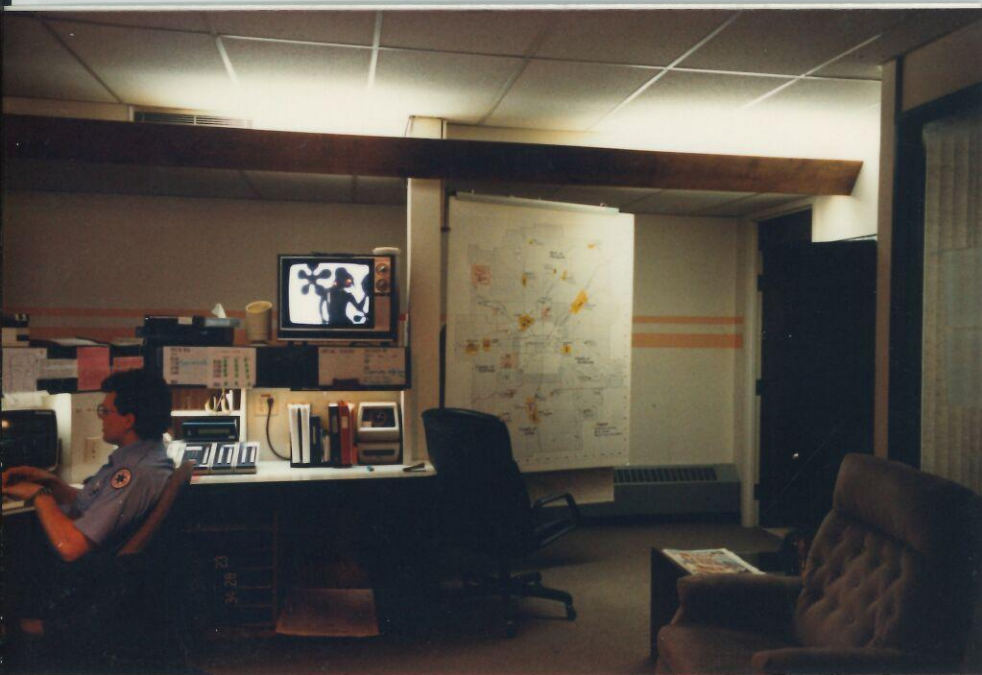


April 28, 1989

#1

14. Communicating Centre-R.H. console-
Dispatcher position. When the training
of new staff is underway, the trainer
sits behind the Call Evaluator or the
Dispatcher and looks over their shoulder.

EB-47-58



April 28, 1989

#1

15. The map area. There are several large maps of Edmonton and the surrounding area ready for instant use. The door at the right leads into the storage area. The supervisors office is behind the vertical blinds-both spaces must open into the communications centre.

EB-47-59



April 28, 1989

#1

16. The cabinets housing wiring.

EB-47-60



April 28, 1989

#1

17. The coffee preparation area must be inside the Communications Centre.

Access to the washrooms is also from inside the C.C..

EB-47-61



April 28, 1989

#1

18. One of the new consoles being installed on the second floor, in old training room space. The staff will now have access to the out-of-doors.

EB-47-62



April 28, 1989

#1

19. From SW adross new centre. Coffee
Preperation area is set back in the
"greenish" space (effect of lighting)
EB-47-63
20. New 24 hour call recorder (dictaphone).
EB-47-64
21. Both consoles along south window.
Supervisor's office behind door
(former office of staff development
group).
EB-47-65



April 28, 1989

#1

22. Exercise area-Cramped. Only one or two activities can be persued at once.

EB-47-66



April 28, 1989

#1

23. Locker area for the building. Window to raquet ball court behind black curtains.

EB-47-67



April 28, 1989

#1

25. One of the washrooms-
one toilet, a shower
and a sink.

EB-47-69



April 28, 1989

#1

24. Change area between
lockers-far too
tight.

EB-47-68



April 28, 1989

#1

27. North wall. There is only room to walk from the door to the desk, between the filing cabinets and the bookshelves.

EB-47-71

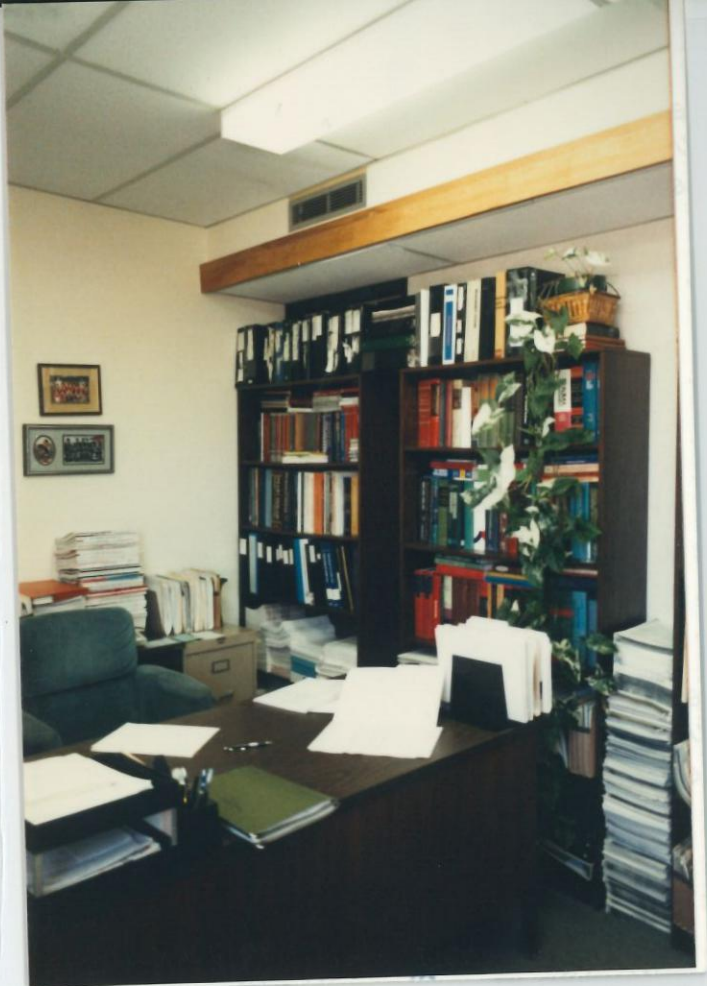


April 28, 1989

#1

26. Office of the medical director, south wall (third floor).

EB-47-70



April 28, 1989

#1

- 28. West wall, SW corner.
EB-47-72
- 29. West wall, middle.
EB-47-73
- 30. West wall to the door.
The lights are on per-
manently because the
light switch is behind
the bookshelves.

EB-47-74





April 28, 1989

#1

31. Coffee area, third floor-can be accessed by Communications staff and medical director, anyone else using the lounge area (smoking).

EB-47-75



April 28, 1989

#1

32. Documentation area on the main floor. Used by incoming EMT's to complete reports at the end of a shift. Shift change in progress.

EB-47-76



April 28, 1989

#1

34. Shift change in progress. Mail distribution centre for all staff. (The buckets were catching water from a leak coming from another floor).

EB-47-78



#1

April 28, 1989

33. Shift change in progress. EMT's re-stocking vehicles from the mobile linen store. Door to garage is at the far end.

EB-47-77



April 28, 1989

#1

35. Kitchen area. Looking east.

EB-47-79

36. Kitchen area.

EB-47-80

37. View into lounge area from hallway beside kitchen; Supervisors' office behind glass.

Document display rack being used by an EMT.

EB-47-81



April 28, 1989

#1

38. View of hall leading to garage (left of divider) and entrance to laundry (black door) and kitchen (right of divider).
Shift change still in progress.

EB-47-82



April 28, 1989

#1

39. Library/quiet area with an EMT working.

EB-47-83



April 28, 1989

#1

40. Same areas at end of shift change.

EB-47-84



April 28, 1989

#1

41. Same areas at end of shift change.

EB-47-85



April 28, 1989

#1

- 42. Garage area at start of shift change-all vehicles in place. EB-47-84
- 43. Vehicle by north wall; door cannot open fully. EB-47-85
- 44. Vehicle by south wall. Yellow lines on the floor indicate parking area per vehicle. Each vehicle actually requires 15' x 22' to allow for doors to open fully on both sides, and staff to be able to circulate easily around vehicle. EB-47-86



April 28, 1989

#1

45. View inside vehicle. Each vehicle is washed inside and out after each shift. The EMT's must take turns, thereby prolonging the length of the shift change. EB-47-87
46. Wash rack and vacuum cleaner. Used for all vehicles. Supervisor's vehicle to right. A 6th vehicle is parked in front of this vehicle. EB-47-88
47. Last ambulance pulling out at end of shift change. EB-47-89

April 28, 1989

#1

48. Laundry area, looking west. Washer and dryer and dirty linen cart.

EB-47-90



April 28, 1989

#1

49. Laundry area, looking east. Bulk soaps, disinfectants attached to machines. Cabinet at right is extra storage for laundry supplies.

A second laundry is being considered for #5 because this one is not large enough for the volume of linens.

EB-47-91





April 28, 1989

#1

50. Disposable medical supplies room. L.H.
view-south wall from door of squad room.

EB-47-92

51. R.H. view-west wall, north wall.

EB-47-93

52. East wall. Small oxygen cylinders.

EB-47-94

This area has been created to serve the
sub-station function and has reduced
the size of the squad room by 50%.



April 28, 1989

#1

53. Crew quarters - There are six bunks in this area which are part of the sub-station function.

EB-47-95

PICTURE MISSING

April 28, 1989

#1

54. Storage of an extra linen cart and other supplies in a corner of the crew quarters.

EB-47-94



April 28, 1989

#1

55. Supervisors' office. Desks on south wall, looking west. The interview room/supervisors lounge is behind the glass wall, as well as access to the supervisors' dorm.
EB-47-96
56. The battery recharger for portable radios is to the right of the pillar. Should be closer to the garage for easy access by EMT's.
EB-47-97
57. Bookshelves and filing cabinets used by supervisors.
EB-47-98



Edmonton Ambulance Authority
 #9 Station, Room
 Edmonton General Hospital
 Edmonton, Alberta

PHOTO SURVEY - July 26, 1989

1. Emergency Entrance to the Edmonton General Hospital, on East side of the building.

Entrance to the Sub-Station is along a corridor, down stairs and through the cafeteria.

EB-47-41



July 26, 1989

#9

2. Long view of cafeteria and entrance to crew quarters. This floor is partly below ground level.

EB-47-42



July 26, 1989

#9

3. Entrance to crew quarters is through a cafeteria.

EB-47-43

4. View of crew quarters to the West from the door.

EB-47-44

5. View of other half of the quarters from North West corner. There is no T.V. here.

EB-47-45





April 28, 1989

1. Western GMC Hanger

Storage for two multiple patient buses,
a high top, and an ambulance.

This location is used regularly for these
vehicles.

EB-47-46



April 28, 1989

2. A view inside the bus. There is room
for six patients and the necessary
number of staff.

EB-47-47



Edmonton Ambulance Authority
#2 Station, Private Garage
109 Street & University Ave.
Edmonton, Alberta

PHOTO SURVEY - July 26, 1989
April 28, 1989

EB-47-99

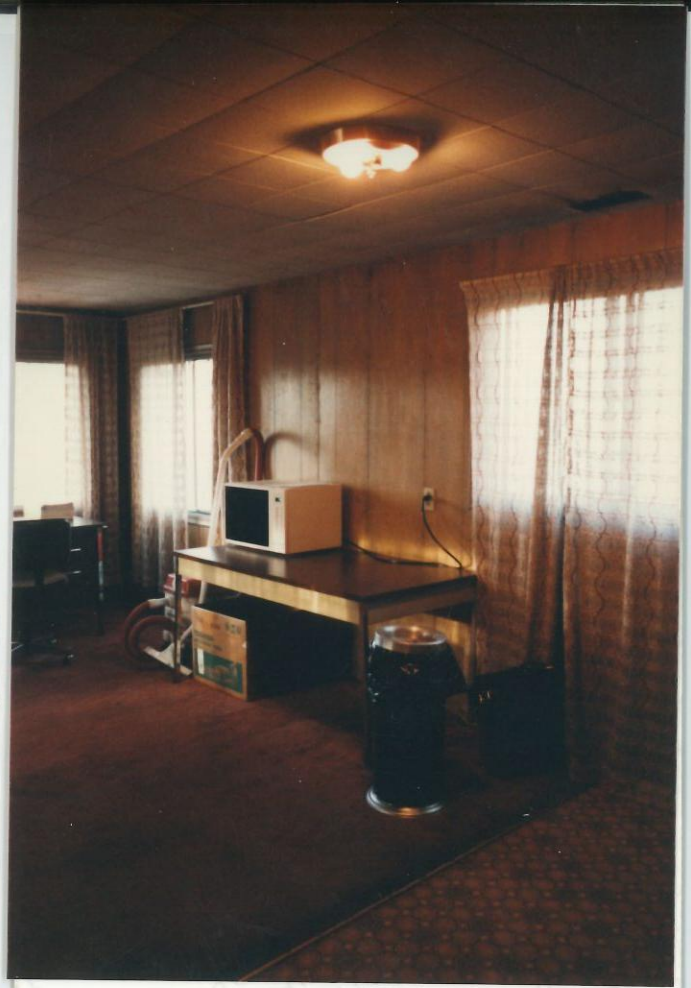


July 26, 1989

#2

1. View of entrance to #2 from across the Avenue to the North. It is an addition to a private house.
2. View of the private house from the front (South); the addition is not visible from his side.

EB-47-100



April 28, 1989

#2

3. The floor of the garage was lowered so vehicles could get un. The door to the left at the back is the entrance to crew quarters. EB-47-101
4. L.H.S. - lounge area from top of stairs to North. EB-47-102
5. R.H.S. - lounge area, to North and East. EB-47-103

Sleeping area is to left from top of stairs, and has two bunks.

EB-47-103





Edmonton Ambulance Authority
 #3 Station, Private Garage
 93 Street, 127 Avenue
 Edmonton, Alberta

PHOTO SURVEY - July 26, 1989



July 26, 1989

#3

1. A view of Ambulance from across 127 Avenue. Staff can barely walk around the vehicle when it is parked outside. EB-47-104
2. View of Ambulance from back door. Entrance to garage is to left of photo, behind the trees. The garage is just big enough to house the vehicle; it has no wash facilities, and in the winter the Ambulance must be parked at an angle to avoid hitting the space heater attached to the rafters.

EB-47-105

July 26, 1989

#3

3. View from back door - crew go up 4 stairs, down a short hall and down the basement stairs to their quarters.

EB-47-106



July 26, 1989

#3

4. View down basement stairs; crew quarters is to the left.

EB-47-107





July 26, 1989

#3

NOTE: This is in a basement.

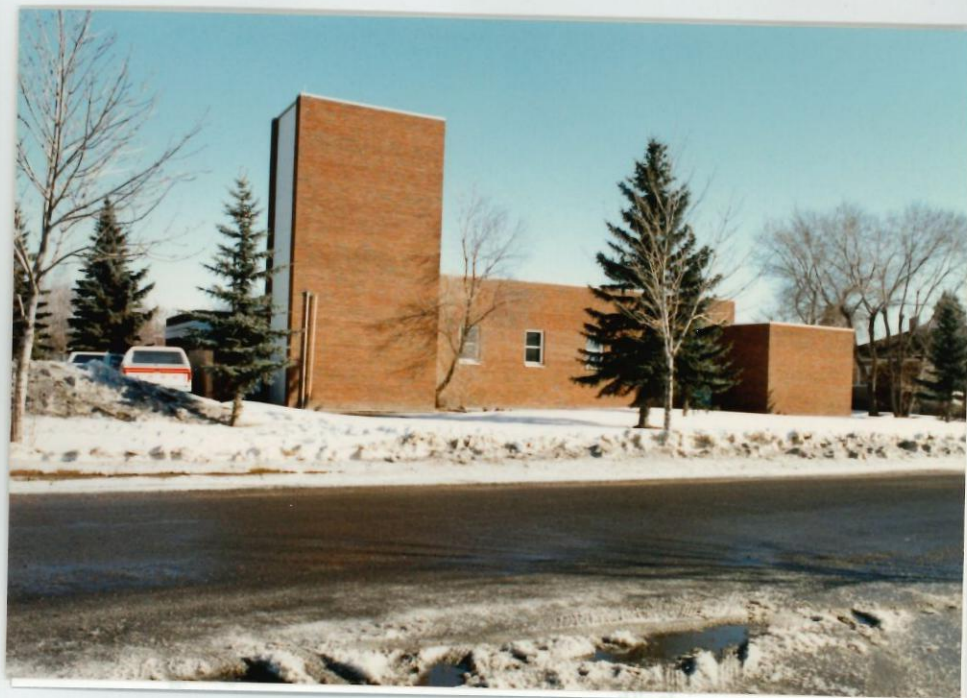
5. Right hand view of crew quarters. *EB-47-108*
6. Middle view of crew quarters. *EB-47-109*
7. Left hand view of crew quarters. *EB-47-110*





Edmonton Ambulance Authority
#4 Station, Former Firehall
10526 - 142 Street
Edmonton, Alberta

PHOTO SURVEY - March 23, 1989



March 23, 1989

#4

1. L.H. view of west side of building,
taken from S.W. EB-47-111
2. R.H. south face of building
EB-47-112



March 23, 1989

#4

3. Vehicle storage on side of parking pad. Outside storage of vehicles is not satisfactory because they carry intravenous fluids and drugs which cannot be allowed to freeze. During the winter they are left idling in below 0°C temperature.

EB-47-113



March 23, 1989

#4

4. Disposable medical supplies(day stores).

June 23, 1989

Re: 4,5,6.

There has been construction and rearrangement since these photos were taken.

EB-47-114



March 23, 1989

#4

5. Disposable medical supplies. This is the bulk storage; they are distributed to other stations from here. *EB-47-115*

Existing size prevents bulk buying. Goal is (1) take advantage of price discounts and (2) have backup for a major emergency. Shelving inadequate - need industrial style to hold fluids (presently stored elsewhere).



March 23, 1989

#4

6. Uniform Room. Uniforms for all staff are distributed from here. Overflow disposable medical supplies are in the centre. *EB-47-116*

Stack of metal boxes by uniform rack are replacement trauma kits. The red boxes by the fire extinguishers are replacement CPR machines (thumpers). There is no space large enough to hold all the supplies and provide a control point.

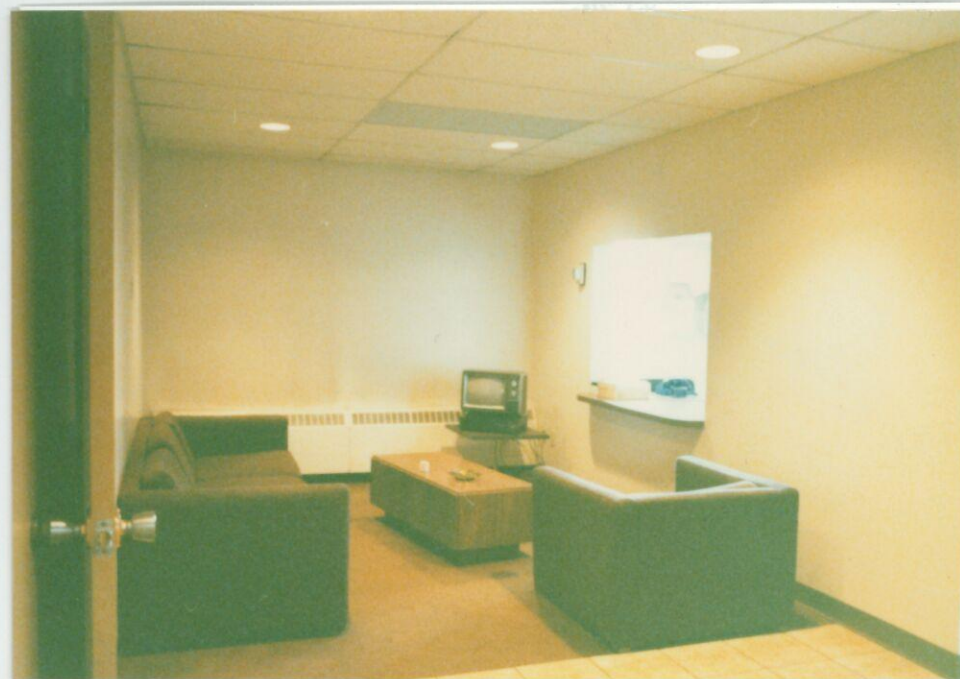


March 23, 1989

#4

7. Uniform Room. Copier just inside by door.

EB-47-117



March 23, 1989

#4

Sub-Station Area

8. Lounge area. Kitchen area on right of lounge, sleeping area to left.

EB-47-118



March 23, 1989

#4

Sub-Station Area

9. Table seen from kitchen side. Window is on north side of building.

EB-47-119



March 23, 1989

#4

10. Mechanical Services area, looking south along workbench area.

EB-47-120



March 23, 1989

#4

11. Oxygen Room. Door and room meet bylaw requirements of being explosion-proof and ventilated. Because E.A.A. mans the station 24 hours a day, the Fire Dept doesn't require oxygen storage on the outside wall, as they would in a new facility.

EB-47-121



March 23, 1989

#4

12. Stretchers to right of door are stored there while vehicles are being repaired.

EB-47-122



March 23, 1989

#4

- 13, Ambulance is on a hoist. The existing hoist is to be replaced, and a second is to be added. Both are wider than existing hoist, thus creating cramped access and working space for getting the vehicles in and for working on them. Three inside parking spots will be lost because of the size of the new hoists.

EB-47-123



March 23, 1989

#4

14. Most southerly of the three bays. Note storage of a wide variety of articles along wall. The small door leads to the tower and a storage area.

EB-47-124

March 23, 1989

#4

15. Main floor storage.
Note joists and pillars
that create a second
level in the tower,
and the rope and pulley
arrangement used to hoist
boxes and so on to the
second level. The tanks
hold oils and lubricants
of various types for the
vehicles.

EB-47-125



March 23, 1989

#4

16. Equipment and materials
stored inside the door
of the tower (main floor).
There is a third floor,
also, at the top used to
store tires, jacks and
other mechanical parts.

They are also raised and
lowered by rope and
pulley.

While the use of space
is economical, using a
pulley to raise and lower
goods is time-consuming
and dangerous.

EB-47-126





March 23, 1989

#4

17. The two vehicles facing the door (west) are day shift vehicles.

EB-47-127

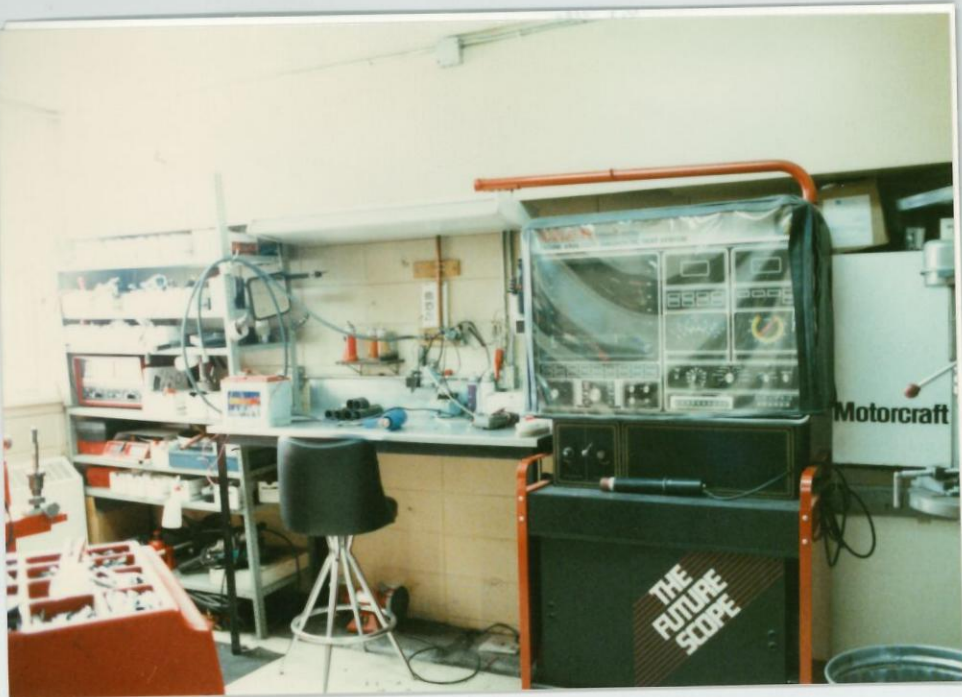


March 23, 1989

#4

18. The vehicles facing east are in the repair portion of the garage.

EB-47-128



March 23, 1989

#4

19. The scope, other equipment and the workbench in the room just off the mechanical services area (to the east).

The scope and other equipment should be kept on the shop floor. It is kept back here for security reasons.

EB-47-129



March 23, 1989

#4

20. Parts storage. The door at right goes into the mechanical services area.

EB-47-130



March 23, 1989

#4

- 21 Storage of small containers of oil, window washer fluids and so on. These small containers go into the vehicles for emergency use. This area faces the shelving in #20.

EB-47-131



March 23, 1989

#4

22. The next bay of storage. All the shelving was fitted into existing space.

EB-47-132



March 23, 1989

#4

23. More equipment storage.

EB-47-133



March 23, 1989

#4

24. New computer terminal used to keep track of parts and repair schedules of individual vehicles.

EB-47-134



March 23, 1989

#4

25. Schedule board for all the vehicles. There is only room for 25 vehicles; there are 30 in all.

EB-47-135

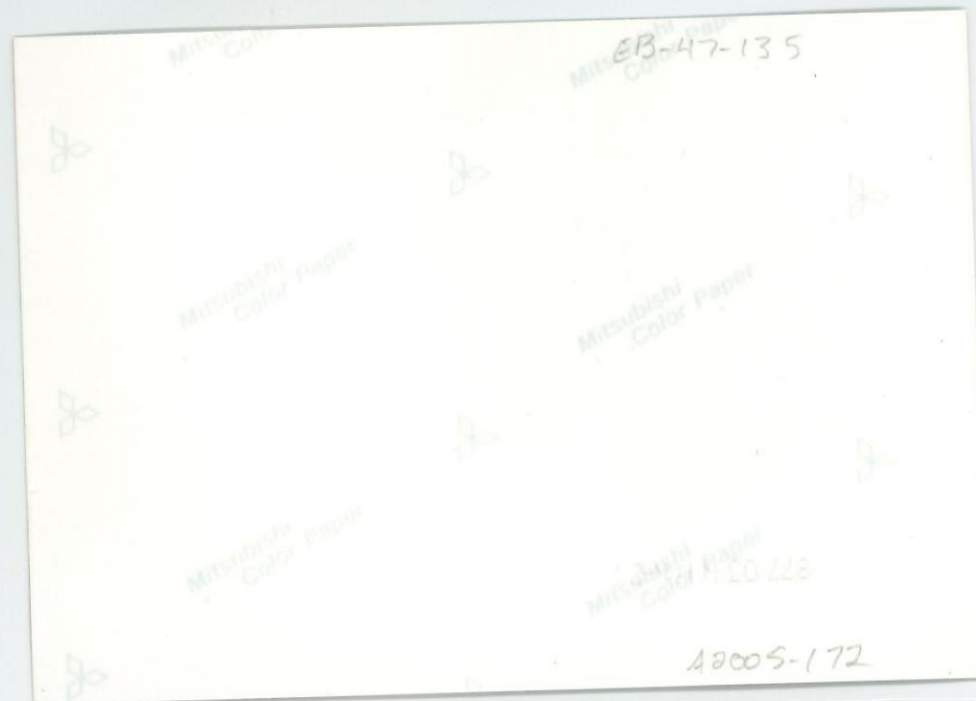


March 23, 1989

#4

26. Cleaning supply storage and mechanics lockers. This area has been designated as a medical equipment repair area.

EB-47-136



March 23, 1989

#4

27. Vehicle modifications being performed

The barbage bin by the door is for soiled linens. When the bin is full, it is taken to #1 for laundering.

EB-47-137





April 28, 1989

#4: Mechanical Services

1. The new hoists in place (See March 23, #4 station, photo #18.)

EB-47-138

April 28, 1989

#4

2. The new hoists from the workbench area. The parking space to the right of the vehicle is now very narrow and is useful for parking only.

EB-47-139



April 28, 1989

#4

3. A close up of the front edge of the hoist which takes up the entire work bay.

EB-47-140



April 28, 1989

#4

4. A view of the parking spot to the north of the hoists. The supervisor is collecting dirty linen for return to HQ.

EB-47-141



Edmonton Ambulance Authority
#5 Station, Former Firehall
6506 - 118 Avenue (Beverly)
Edmonton, Alberta

PHOTO SURVEY - March 23, 1989



March 23, 1989

#5

1. L.H. south side of former firehall,
facing 118th Avenue. Built in 1941
EB-47-142
2. R.H. east side of station. Chain link
fence around vehicle compound.

EB-47-143



March 23, 1989

#5

3. Crew quarters, facing north.

Staff carry their own linen for use in the various stations they work out of.

EB-47-144



March 23, 1989

#5

4. Lounge/briefing area, facing north.

Photos 3 and 4 are either side of the folding door.

EB-47-145



March 23, 1989

#5

5. Lounge/briefing area. Little effort has been spent on upgrading the facility due to indecision regarding length of tenancy.

EB-47-146



March 23, 1989

#5

6. Squad Room.

EB-47-147



March 23, 1989

#5

7. Door at left by chair leads to crew quarters.

EB-47-148



#5

March 23, 1989

8. Locker room in south end of building.

EB-47-149

March 23, 1989

#5

9. Sinks in washroom.

EB-47-150



March 23, 1989

#5

10. Toilet area of washroom.
There has been no
upgrading in this area,
either.

EB-47-151



March 23, 1989

#5

11. Storage of extra stretchers for the Authority... stretchers for use during major incidents. Should be in a major stores area.

EB-47-152





March 23, 1989

#5

12. Garage, looking N.E.

EB-47-153



March 23, 1989

#5

13. Garage, looking S.S.E.

The drainage systems are clogged constantly because the water lines are too small.

EB-47-154



March 23, 1989

#5

14. Garage showing cleaning equipment storage.

EB-47-155



March 23, 1989

#5

15. Storage cabinet for cleaning supplies. Also waste disposal unit for all kinds of refuse, including medical.

EB-47-156



April 28, 1989

#6

1. View of sub-station #6, 9813-34 ave.. The sub-station extends the length of one parking bay, the entrance door, and three windows (draped, seen over supervisor's vehicle).

EB-47-157

2. The crew quarters for this sub-station have been created in a warehouse complex at 98 street and 34th ave..

EB-47-158

3. Crew quarters do not extend for full length of the bay, wash rack on side of C.Q..

EB-47-159



April 28, 1989

#6

4. Lounge area from door. The video machine and tapes are training material from staff development.

EB-47-160

EB-47-157



April 28, 1989

#6

9813-34 Ave.

5. Lounge area. Entrance to right of photo, by armchair.

EB-47-161





April 28, 1989

#6

6. Food preparation in hallway outside lounge area (to right of table) and in circulation route to sleeping quarters.

The space overall is not well laid out and is cramped.

EB-47-162



April 28, 1989

#6

7. Sleeping quarters for three.

EB-47-163



Edmonton Ambulance Authority
#7 Station, Trailer
Misericordia Hospital
Edmonton, Alberta

PHOTO SURVEY - July 26, 1989

1. View of Emergency Entrance from the North, looking South. The trailer is to the left (East) of the Emergency Entrance and is accessed from inside the Emergency area.

EB-47-164



2. Entrance to the room. E.A.A. is located in the trailer because of renovations, being carried out at the Hospital.

EB-47-165

July 26, 1989

#7

July 26, 1989

#7

3. Left hand view of one room in an ATCO trailer beside the Emergency Entrance at the Hospital.

EB-47-166

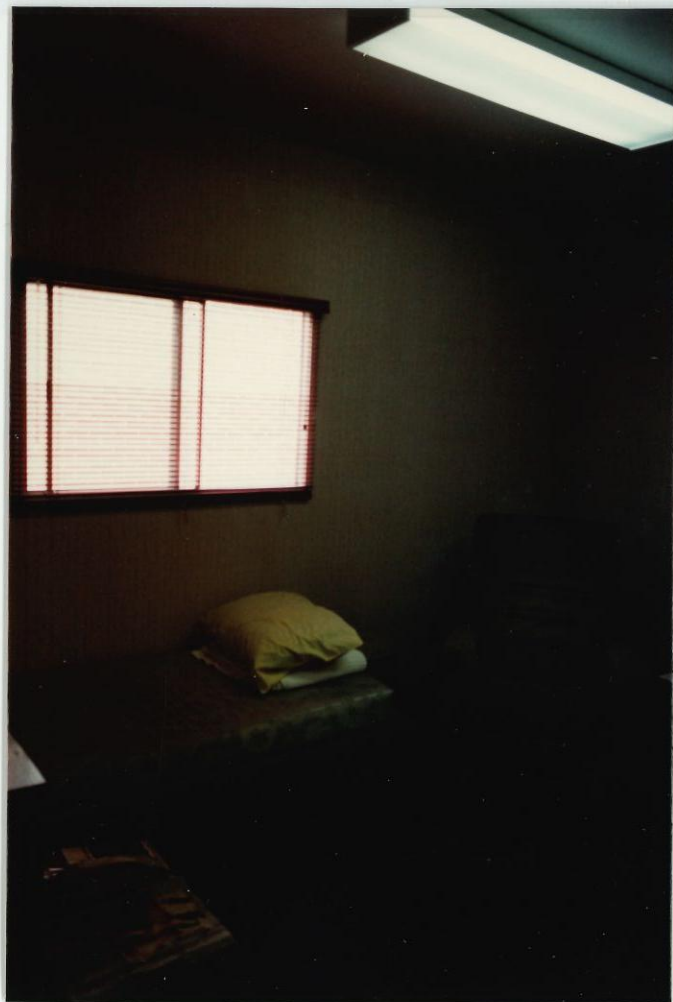


July 26, 1989

#7

4. Right hand view of one room in an ATCO trailer beside the Emergency Entrance at the Hospital.

EB-47-167





Edmonton Ambulance Authority
#8 Station, Former Firehall
8309 - 90 Avenue (Bonnie Doon)
Edmonton, Alberta

PHOTO SURVEY - March 23, 1989

EB-47-17



March 23, 1989

#8

1. L.H. north side of station.
2. R.H. south side of station;
staff entrance.

EB-47-18



March 23, 1989

#8

3. Dead record storage for the Authority as there is not enough space at headquarters.

This room is full. Some of the records are to go to the Corporate Records Centre, and the decision process is underway.

EB-47-19



March 23, 1989

#8

4. In 1986, new boiler was installed; the ceiling was opened in order to install the pipes.

EB-47-20



March 23, 1989

#8

5. Equipment/materials storage for the Training group of the Personnel Branch.

EB-47-21



March 23, 1989

#8

6. Materials waiting for disposal.

EB-47-22



March 23, 1989

#8

7. The office pspace for the training staff.

this group has been moved from
headquarters because of a lack of
space.

EB-47-23



March 23, 1989

#8

8. Staff Room.

Used by everyone in the building,
including trainees.

EB-47-24



March 23, 1989

#8

9. A group of recruits in a training session. The space is in the basement.

EB-47-25



March 23, 1989

#8

10. Same group with Instructor and AV equipment.

EB-47-26



March 23, 1989

#8

11. Crew quarters on the second floor.
Behind the brown screen are two
bunks.

EB-47-27



March 23, 1989

#8

12. Crew quarters - working/lounging
area.

EB-47-28



March 23, 1989

#8

14. Supervisors' office
from door of sleeping
quarters.

supervisors' area has
been modified and re-
painted June, 1989.

EB-47-30



#8

March 23, 1989

13. Supervisors' sleeping quarters on
main floor. Adjacent to office.

EB-47-29



March 23, 1989

#8

15. Storage of supplies for #8. Supplies are distributed from the West end station (#4).

Note the oxygen tanks. These are for all the cars which change out of this station.

EB-47-31



March 23, 1989

#8

16. Disposable medical supplies for #8. These supplies are distributed from #4, and are for the vehicles.

EB-47-32



March 23, 1989

#8

17. A mobile cart for linens.

EB-47-33



March 23, 1989

#8

18. The locker room. More lockers are expected as there will be more staff operating out of this station.

EB-47-34



March 23, 1989

#8

19. All the equipment and supplies for washing and cleaning the ambulances.

EB-47-35



March 23, 1989

#8

20. The day crew's ambulance ready to go.

EB-47-36



April 28, 1989

#8

Shift change at #8

1. squad room L.H.S. - East wall.

EB-47-37



April 28, 1989

#8

2. Squad room R.H.S. - South wall.

#8 is a former firehall; The basement area was up-graded for use by the Bonnie Doon Social Services and has been taken over by the E.A.A. staff developement unit.

The staff room is used as a squad room at shift change.

EB-47-38



April 28, 1989

#8

3. Crew quarters on 2nd floor, #8. An E.M.T. and a ride along student working on reports.

EB-47-39



April 28, 1989

#8

4. #5 is a former firehall, 6506-118 Ave. Used as a sub-station and also as storage for vehicles not in service.

This space is almost large enough to allow personnel to walk around vehicles. It is supplied with wash rack and cleaning supplies. (See March 23, #14)

EB-47-40

This digitized document is part of the City of Edmonton Archives' RG-71, City of Edmonton. Edmonton Ambulance Authority fonds, Series 1 – Administrative Records.

Some archival material may be protected by legal restrictions on access. Where possible, restrictions such as FOIP have been noted on the finding aids.

The copyright law of Canada governs the making of reproductions of copyright material. Certain copying may be an infringement of the copyright law. The City of Edmonton Archives is not responsible for infringing copies made by its researchers.

To request material, please contact the Reference Archivist at 780-496-8711 or cms.archives@edmonton.ca and provide us with the following information:

- Fonds number
- Accession number (e.g. A97-123) if applicable
- Series or class number
- Sub-series or sub-class number if applicable
- File number
- File name

As an example, you would request MS-123 series 1 sub-series 1.2 file 23 Correspondence

Unless otherwise specified, this digitized document is © 2019 City of Edmonton.

RG-71 Series 1

File # 32 – Edmonton Ambulance Authority

Photo Survey

CITY OF EDMONTON ARCHIVES DIGITIZED DOCUMENT

